



Teams and Microsoft 365 Sharing - Unstructured and Structured



Peter Carson

President, Envision IT and
Extranet User Manager



About Me

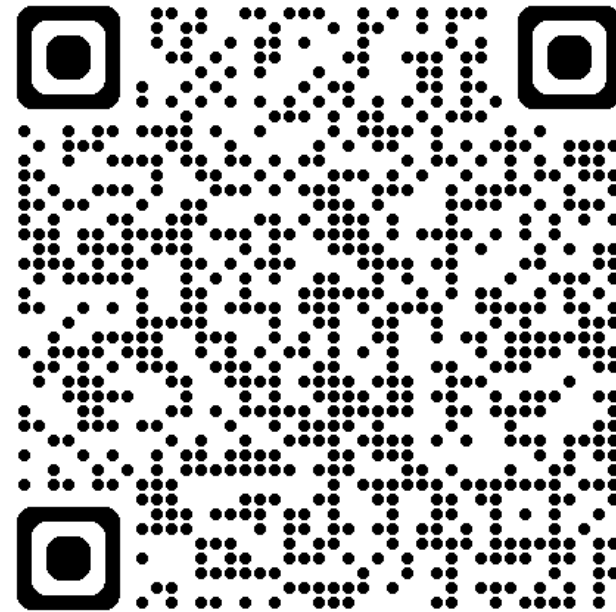
- Microsoft M365 MVP
- peter@envisionit.com
- blog.petercarson.ca
- President, Toronto SharePoint User Group



Enter Our Draw to Win Half Hour Driving Experience



- You get to drive the car
- Join us at the end of the conference or get a voucher for later
- Scan the QR code below to enter





Agenda

Introductions

Unstructured Sharing with Microsoft 365

Teams Shared Channels

Azure AD B2B

MFA and Sensitivity Labels

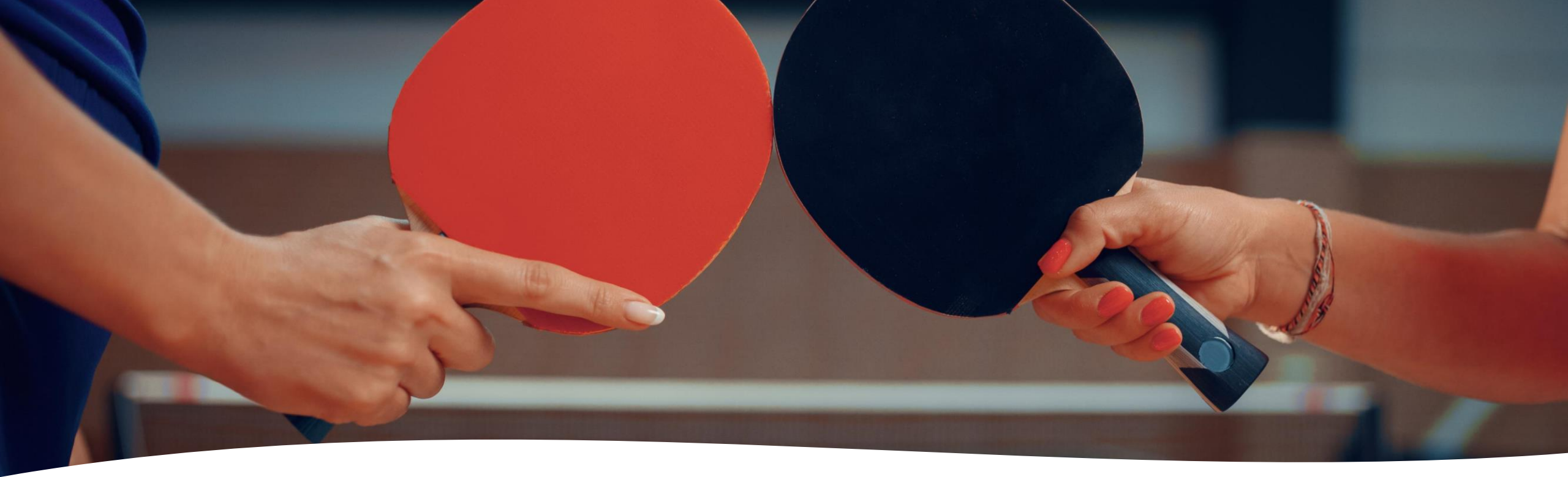
Microsoft 365 Portals

Summary, Q&A and Closing

The Need for Sharing in the Modern Workplace

- **Email Insecurity**
 - 91% of cyberattacks are initiated through email phishing (source: [Deloitte](#))
- **Dark IT Risks**
- **Widespread Need Across Industries**
- **Centralized Document Exchange**





Email Document
Exchange: Ping
Pong (but less fun)

Using email for document exchange can be a constant back-and-forth, just a game of ping pong.

The Hidden Costs of Insecure Sharing



Data Loss



**Financial Drain
from Shadow IT**



Cyber Attacks



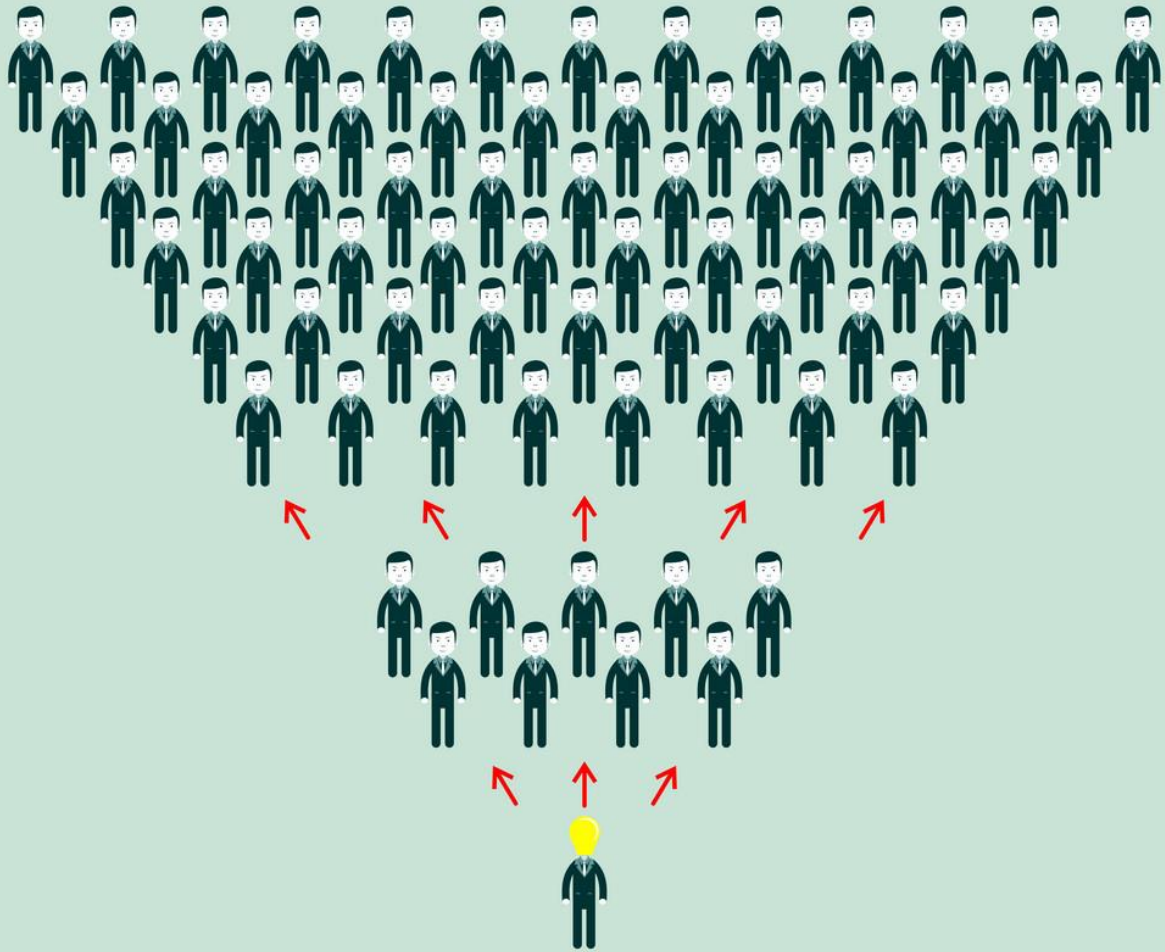
**Underutilized Microsoft
365 Investments**



**Process Management
Inefficiencies**



**License Redundancy
Expenses**



When Version Control Gets Out of Control

- **Email sharing often leads to multiple threads, resulting in multiple document versions**
- **Without centralized version control, documents can be altered unknowingly**
 - Tracking changes becomes nearly impossible
- **Each attachment sent multiplies risk of security breach**

The Choices are Endless for Commercial Solutions



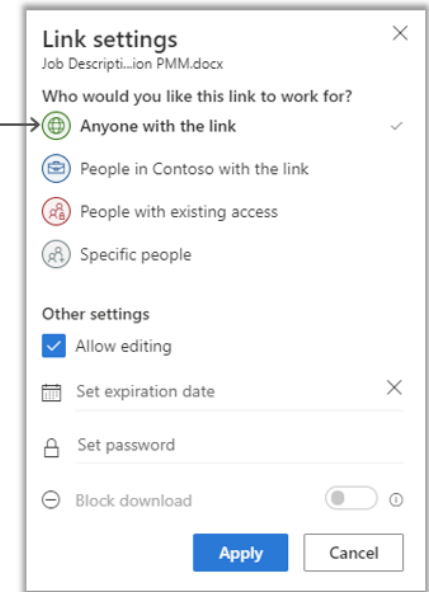
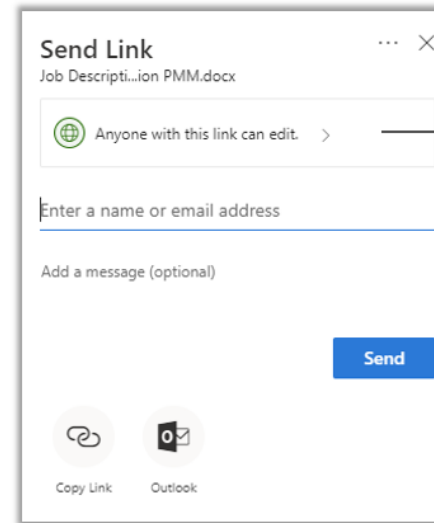


Why Microsoft 365?

- **It's the place your employees are already working**
- **Users are more likely to utilize platforms they already understand and trust**
- **Robust security features, with continuous investment in state-of-the-art cybersecurity measures.**
- **Extensive compliance certifications**

What is Unstructured Sharing in Microsoft365?

- External Sharing in Microsoft 365 strongly supports ad-hoc collaboration
- Unstructured sharing involves sharing documents with a few to a few dozen external people
- Secure Link sharing to sites, libraries, and documents



Microsoft 365 External Sharing OOTB

- | | | |
|--|---|--|
| 1. Who will you be sharing with? Is there a member database to interface with? | → | Any type of external user |
| 2. Self-registration option or invitation only?
Who approves new registrations? | → | Invitation only |
| 3. How will your external users authenticate? | → | Microsoft 365 / Entra ID, Microsoft Account, One Time Passcode, Gmail, Facebook |
| 4. What interactions are your external users going to have? | → | Any interactions |
| 5. What applications will be accessible? | → | Microsoft 365 only |

Microsoft 365 Tools for Unstructured Sharing



Request Files with OneDrive for Business

- Ask colleagues and external users to upload files to a folder
- Uploaders can only see their own content



Shareable Links in SharePoint Online

- Enable edit and/or read access to colleagues or external users
- Can modify granularity of access



Teams Guests

- Invite guests into your Team to communicate and collaborate

Teams Shared Channels

- Connect users from a trusted organization to join your channel as if it is in their own tenant

Managing External Sharing

Control WHO can share to external users

- Everyone
- Only specific people
- No one

Control WHICH external users can be shared with

- Anyone
- Only authenticated users
- Only authenticated users except specific domains
- Only authenticated users in specific domains
- No one

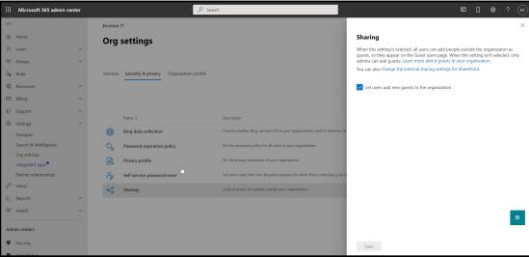
Control WHAT can be shared externally

- Anything
- Only specific sites
- Only files without sensitive content

Control HOW externally shareable links can be used

- Default
- Enabled, but not default
- Mandatory expiration date
- Block externally-shareable edit links
- Disabled

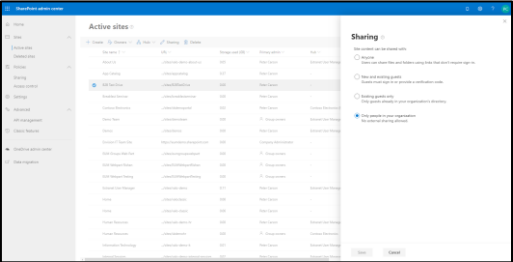
Multiple Places to Configure External Sharing



Microsoft 365 Admin



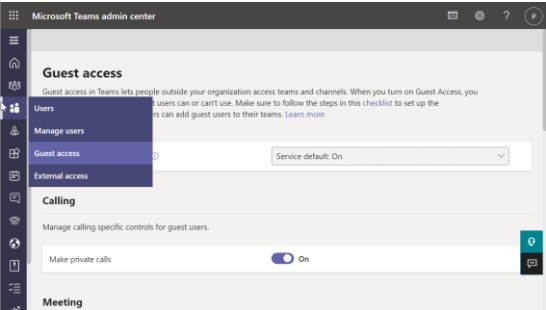
SharePoint Admin



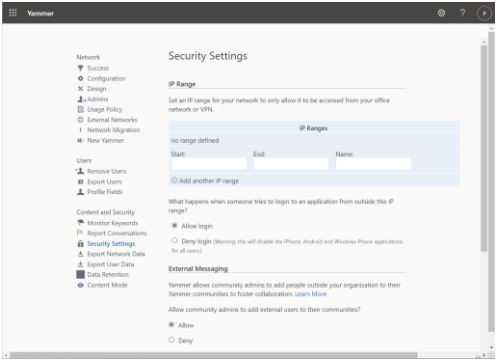
Site Collection Admin



PowerShell



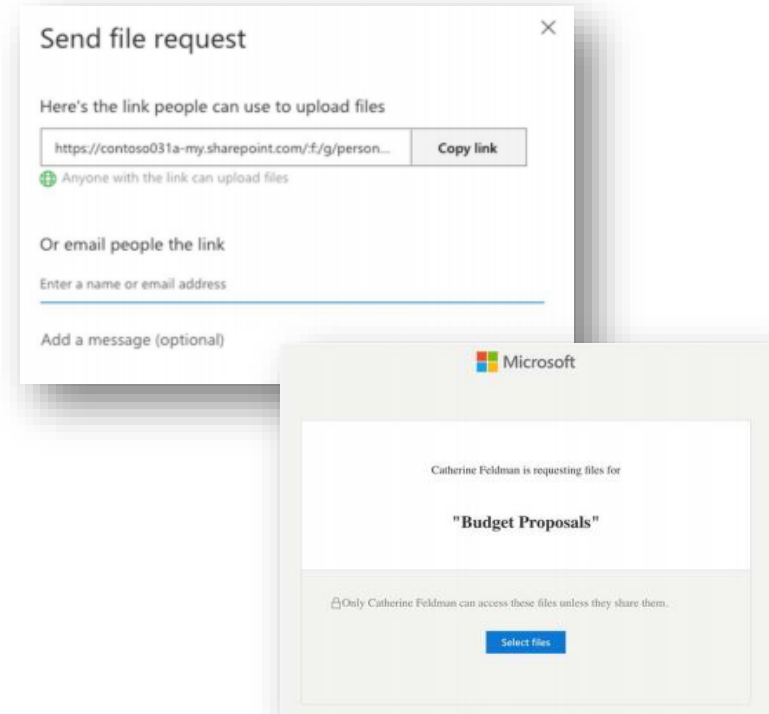
Teams Admin



Yammer Admin

Request Files

- Ask colleagues and external guest users to upload files to a folder
- Uploaders can only see their own content
- Single link can be used for many uploaders
- Branding announced at M365 Conference



[Enable File Requests in SharePoint or OneDrive - SharePoint in Microsoft 365 | Microsoft Learn](#)

External Users in Teams

B2B Guests



- User exists in the external Team's Azure AD
- All the B2B controls apply
- Guests need to switch their Teams to the external tenant
 - Lose their home tenant's Teams, notifications, feeds
- Can use different browser profiles for different tenants

B2B Direct Connect

- Needs to be enabled on both tenants
 - More for organization to organization sharing
- No tenant switching
- Shared channels appear with all the home Teams and channels
- Also appear in home activity feed

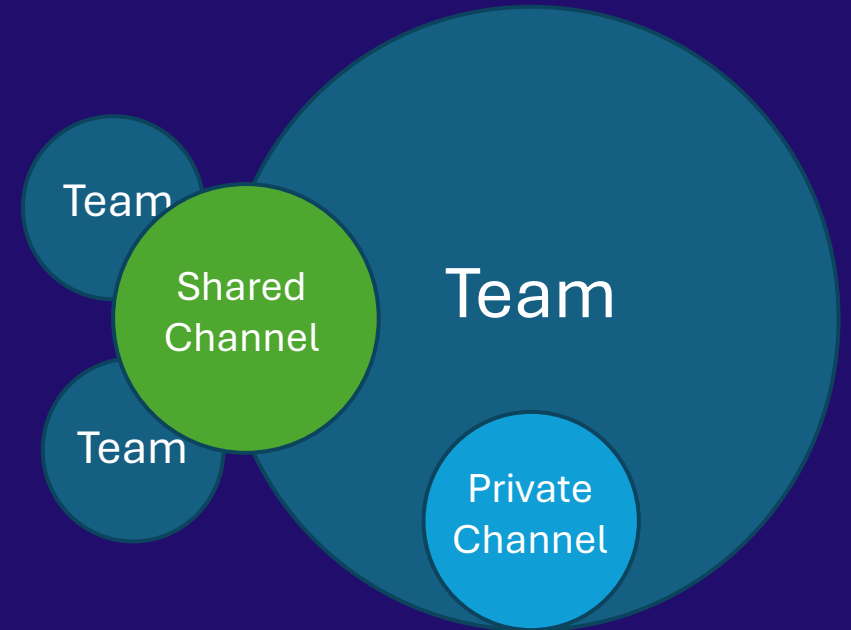
[How We Use Teams Shared Channels | Extranet User Manager](#)

Types of Teams Channels

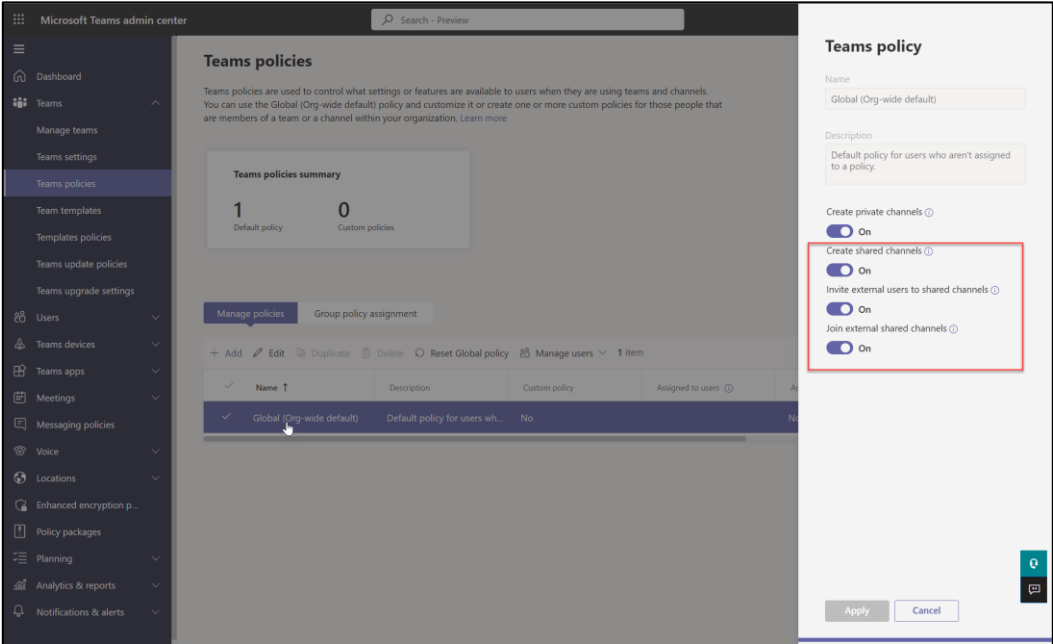
		Standard Channel	Private Channel	Shared Channel
Members		Sames as Team	Subset of the Team members	Any members of the tenant or B2B Direct Connect
Teams		Open to all Team members	Visible only to channel members	
SharePoint		Folder in Team Site collection Documents library All team members have access	New site collection specific to the channel and secured to channel members	
Sharing		B2B Guests	B2B Guests	B2B Direct Connect

Shared Channels vs. Private Channels

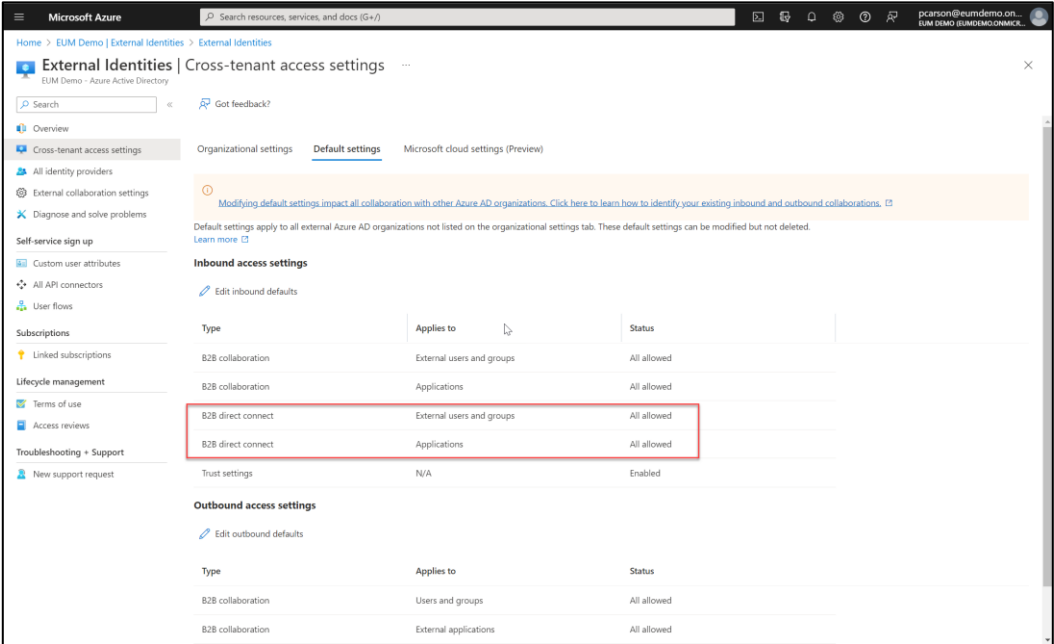
- Both channel styles create a channel site collection for documents
- Both have Teams restrictions on Apps and features
- **Private Channels** let you invite a subset of the parent Team's members
- **Shared Channels** let you invite anyone allowed in the tenant
- Outbound connections don't have to be setup for internal **Shared Channels**



Configuring Shared Channels



Teams Admin



Entra Portal

Shared Channel Shared Channel Recap



Great for both internal only and externally shared channels



You cannot share files from the Shared Channel site collection with anyone not in the channel



Do you like the convenience for the external users not having to tenant switch in Teams?



Will 100% of the people you want to invite in belong to an organization your organization can setup B2B Direct Connect with?

External Users in Yammer



- Yammer was acquired in 2012
- It's been a long road to rearchitect it on the Microsoft stack
- Classic Yammer had its own authentication
 - Yammer username and password
 - Federation
- Entra ID is now the preferred
- B2B support has been added
 - Still seeing some challenges
 - Yammer embed with external users doesn't work



Onboarding External Users through Entra B2B

Microsoft 365 User

- Logs in with their Azure AD credentials
- Seamless experience
- Single sign-on if already signed into Microsoft 365
- Also works for Microsoft accounts

Social User (Google, Meta)

- Federation with Google and Meta accounts now also supported
- Same seamless login experience as Microsoft 365
- Need to be an @gmail.com address for Google Federation

Non-Microsoft 365 Account

- One time passcode
- Emailed at sign-in
- Valid for 30 minutes
- Low friction, no new account to setup or password to remember
- Validates at each sign in that they still own the email address

Email One-Time Passcode Authentication

- New way to authenticate Guest users without:
 - Azure AD account
 - Microsoft account
 - Social provider - Google or Facebook
- Temporary passcode is sent to email address
- Passcode is entered to sign in
- One-time passcode is valid for 30 minutes
- Next user session will send a new passcode to the user

MFA Scenarios

Admins

- Require MFA on every authentication

Guests

- Decide if MFA is required
- User experience and support cost to requiring it
- Doesn't need to be all or nothing
- Sensitivity labels are a good way to control this

Members

- Rules can be more flexible
- Don't need MFA on every authentication
- Every x days on the same device
- Additional rules
 - Joined device
 - Geography
 - Identity Protection score
 - Incorrect password

Entra ID P1 vs P2

Entra ID Premium 1

- Multi-factor authentication with Conditional Access
- Hybrid Identities
- Password protection (custom banned passwords)
- Advanced Security and Usage Reports
- Conditional Access based on group, location, and device status
- Azure Information Protection integration
- And [Much More](#)

Entra ID Premium 2

- Everything offered in P1
- Identity Protection
- Privileged Identity Management
- Access reviews
- Entitlement Management (Preview)

Entra B2B Portal Links

Cross Tenant Settings

- B2B Collaboration
- B2B Direct Connect
- Trust Settings

Identity Providers

- Microsoft
- One-Time Passcode
- Google
- Facebook
- Custom SAML / WS-Federation

External Collaboration Settings

- Access, invite, and collaboration restrictions

Self-Service Sign Up

- User Attributes
- API Connectors
- User Flows

Lifecycle Management

- Terms of Use
- Access Reviews

Company Branding

Security

- Conditional Access
- Terms of Use

Monitoring

- Sign-In Logs
- Audit Logs
- Diagnostic Logs

Updates to Entra ID External Identity Licensing

- External identities now count as unique Monthly Active Users (MAU)
- Billing model affects Entra B2B and B2C
- Replaces 1:5 billing ratio
- First 50,000 MAUs are free for both Premium P1 and Premium P2 features
- Entra ID Free will remain free unless you need premium Entra ID features for guests

	PREMIUM P1	PREMIUM P2
First 50,000 MAU	\$0/Monthly Active Users	\$0/Monthly Active Users
More than 50,000 MAU	\$0.00416/Monthly Active Users	\$0.020736/Monthly Active Users

*Features in public preview are subject to future pricing changes.

<https://docs.microsoft.com/en-us/azure/active-directory/external-identities/external-identities-pricing>
<https://azure.microsoft.com/en-us/pricing/details/active-directory/external-identities/>

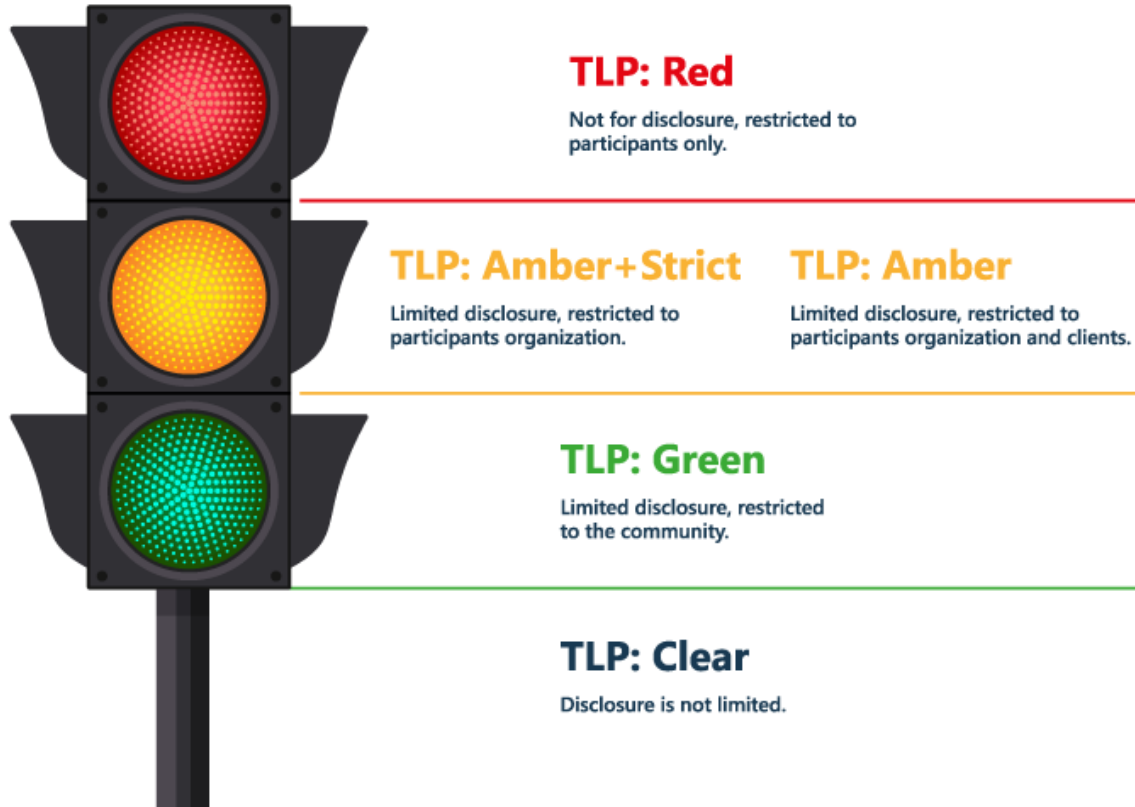
Traffic Light Protocol: Simplifying Sensitivity Labels in Microsoft 365



The **Traffic Light Protocol (TLP)** is a classification system that uses color-coded labels to categorize and control the sharing of sensitive information.

- Developed by the UK's National Infrastructure Security Coordination Centre in the early 2000s
- Encourages sharing of sensitive information
- Adopted by the US Cybersecurity and Infrastructure Security Agency (CISA)

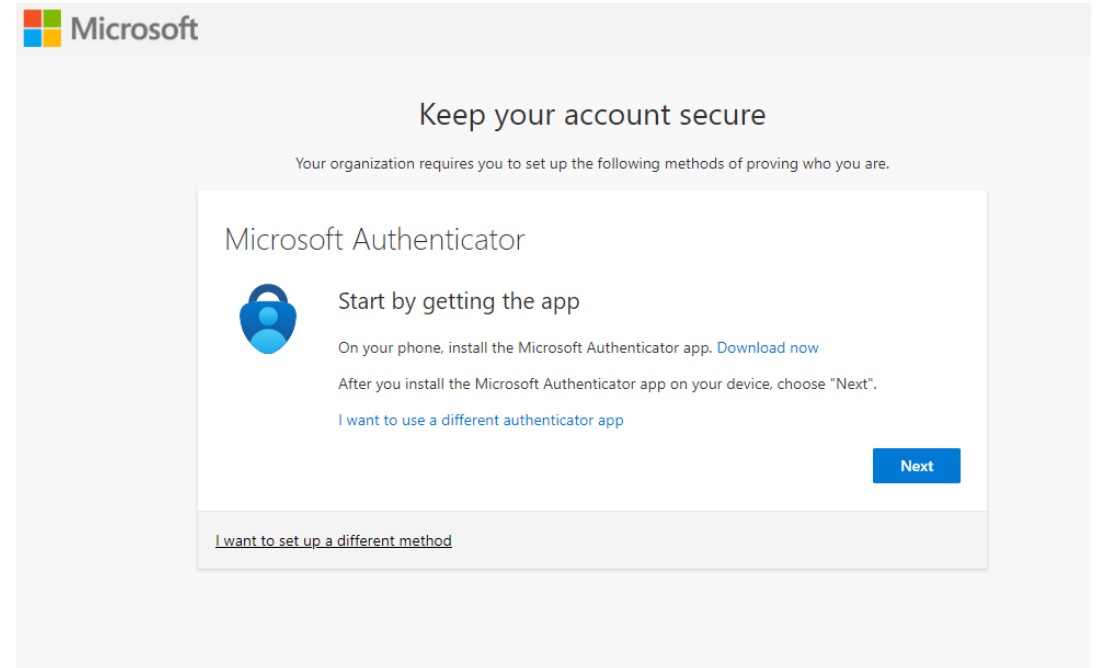
TLP Labels and their Meanings



- **Red:** Most sensitive information; requires MFA and document encryption
- **Amber:** Sensitive information; external sharing allowed with MFA
- **Green:** Less sensitive; accessible to guests without MFA
- **Clear:** Public information; accessible without restrictions

TLP Implementation in Microsoft 365

- Sensitivity labels applied in Microsoft 365
- Integration with Microsoft Purview Information Protection
- Authentication contexts and Conditional Access Policies



TLP and External Access in Microsoft 365

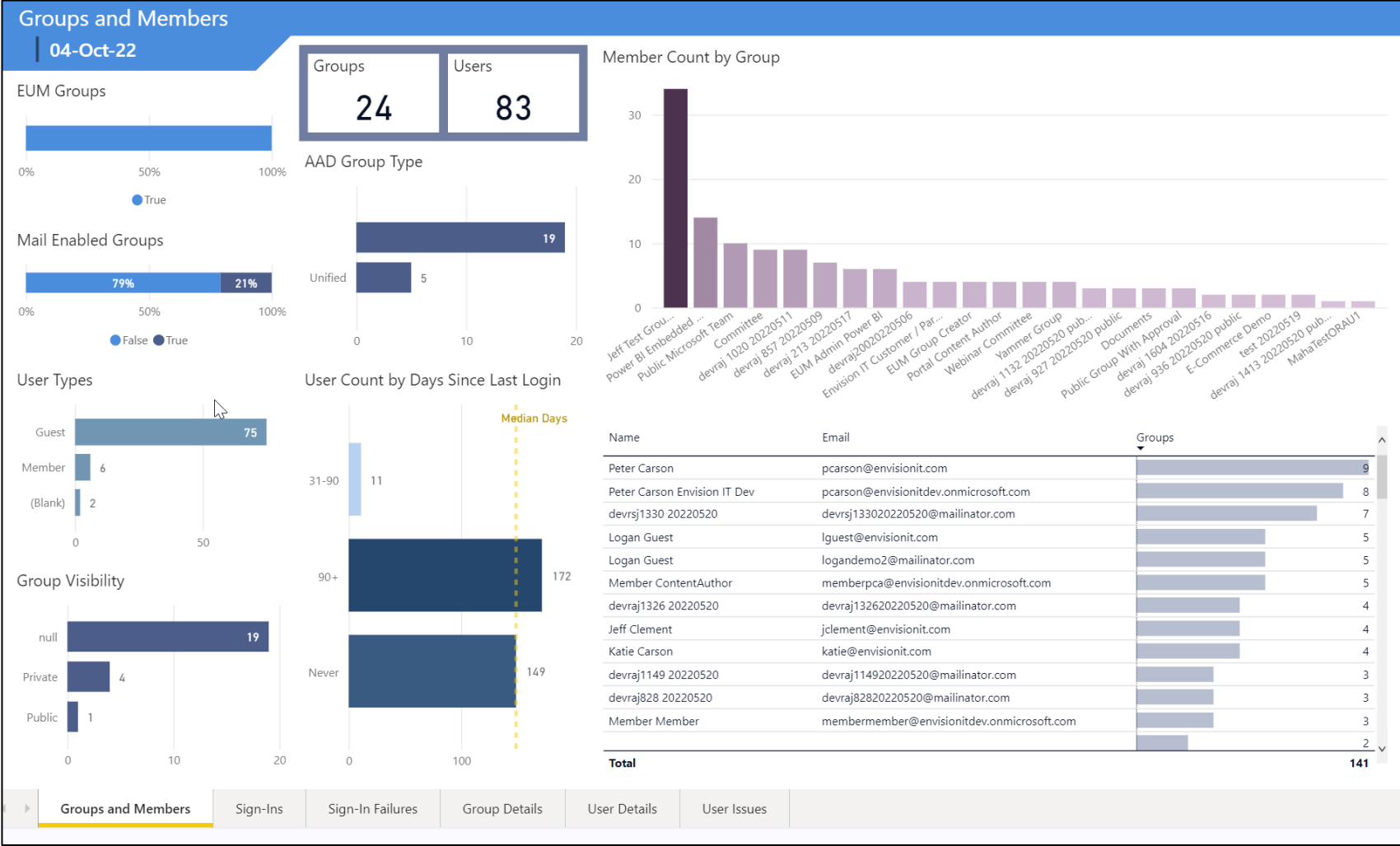
Below is a suggested implementation of TLP for defining guest access in Microsoft 365:

TLP	External Access	Guests Require MFA	Document Encryption	M365 Member Licensing
Red+Strict	No	N/A	Yes	E5
Red	Yes	Yes	Yes	E5
Amber+Strict	No	N/A	No	E3
Amber	Yes	Yes	No	E3
Green	Yes	No	No	E3
Clear	Yes	No	No	N/A

Entra B2B Health

- User Type Not Populated
 - Users created before Aug 2014 when B2B first launched
- Mismatch Between Email and UPN
 - Can cause confusion when signing in
- Missing Email
 - Email is required for direct sign in without accepting the Microsoft invitation
- Unaccepted Invitations
 - Invitations are no longer needed
 - Users that were invited when it was required and didn't accept can't sign in
 - Resending the invitation still requires them to use the invitation
 - Deleting and re-inviting them allows them to sign in without the invitation
- Conflicting Microsoft Account
 - Brings up work/school or personal account dialog
 - Doesn't always prompt
 - Causes confusion

Entra ID Power BI Dashboard


Groups and Members
Sign-Ins
Sign-In Failures
Group Details
User Details
User Issues

Microsoft 365 Portals



Why Build a Microsoft 365 Focused Portal?

Extending Rich Collaboration Functionality Externally

- Microsoft 365 is already the spot you're working and collaborating in
- You can build a robust portal that relies on a strong Microsoft 365 foundation
 - SharePoint Online
 - Documents
 - Teams
 - Meetings
 - Recordings
 - Channel conversations
- **Stop sharing through email and third party solutions**

Why Build a Microsoft 365 Focused Portal?

Robust Security Standards and Offerings

- Leverage the Microsoft 365 Security and Compliance features while hiding the complexity
 - Azure Information Protection, Rights Management and document encryption
 - Data Loss Prevention
 - Records retention
 - Multi-factor authentication and Conditional Access Policies
- **It's time to integrate how you're working with how you're sharing**

Portal Considerations

- How are users invited to the Portal?
 - Invitation Only – Manual or Automated
 - Public Registration
 - Private Registration
- What Portal functionality is required?
 - Secured web content
 - Viewing / Downloading / Uploading documents
 - Co-authoring documents
 - SharePoint Online sites, Teams, or Yammer
 - Third-Party or Internal Applications
- Who is responsible for Portal content and administration?

Types of Portals

Member Portals

Board/Committee
Sites

Reporting and
Dashboards

Data Rooms

Training Portals

Structured Sharing in Microsoft 365



Structured Sharing with Microsoft 365

- Typically hundreds to hundreds of thousands of external users
- Represent many different groups of external users
 - Projects
 - Committees
 - Customers
 - Vendors
 - Partners
- May be many different business owners
 - Owners can be internal or external

Microsoft 365 Structured Sharing Options

Roll Your Own

- Build in the tool of your choice
- Integrate through the Graph API

Entra ID

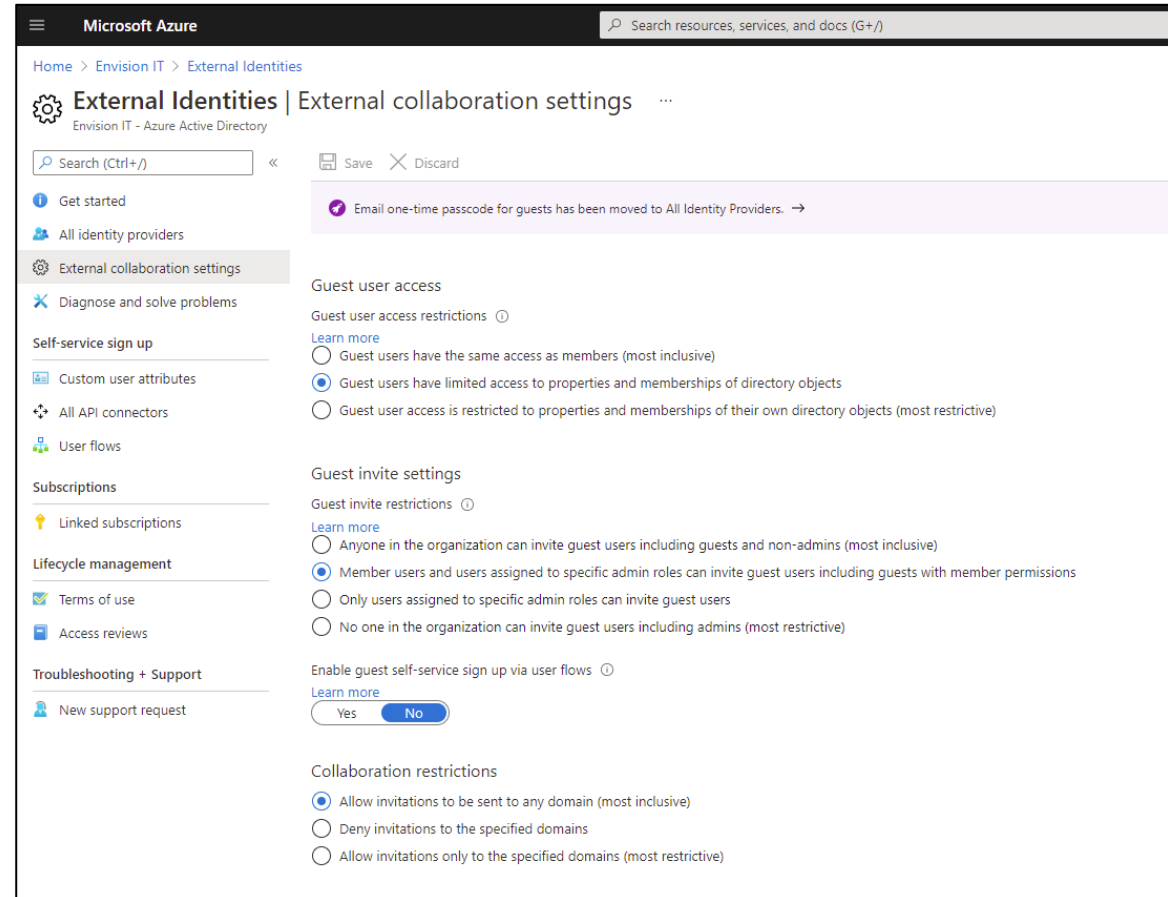
- Self-registration and workflows define onboarding process
- Some branding and customization
- Dynamic groups

Extranet User Manager

- Pre-built .NET Core portal
- Fully brandable and customizable
- EUM Admin portal for creating and managing users and groups
- Licensed by the pool size of external users

Entra B2B

- Self-service sign up
 - Custom attributes
 - API connectors
- Lifecycle management
 - Terms of use
 - Entitlement packages
 - Access reviews



[External Identities documentation | Microsoft Docs](#)

ExtranetUserManager

Sign in

someone@example.com

No account? [Create one!](#)

[Can't access your account?](#)

Next

Welcome to the Extranet User Manager demo site.



ExtranetUserManager

Create account

Sign up with email

Sign up with Microsoft

Sign up with Google

Back



ExtranetUserManager

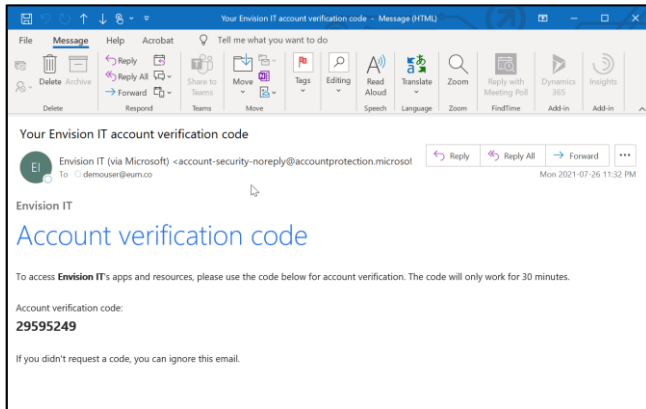
← demouser@eum.co

Enter code

We just sent a code to demouser@eum.co

Enter code

Sign in



Microsoft

demouser@eum.co

Review permissions

Envision IT
eumdemo.onmicrosoft.com

This resource is not shared by Microsoft.

The organization Envision IT would like to:

- Sign you in
- Read your name, email address, and photo

You should only accept if you trust Envision IT. By accepting, you allow this organization to access and process your data to create, control, and administer an account according to their policies. **Envision IT has not provided links to their terms for you to review.** Envision IT may log information about your access. You can remove these permissions at <https://myapps.microsoft.com>.

Cancel **Accept**



ExtranetUserManager

Add more details

You can use this email to sign in next time.

demouser@eum.co

First Name

Last Name

Job Title

Street Address

City

State/Province

Postal Code

Country

Cancel **Continue**



Microsoft

demouser@eum.co

Permissions requested

Azure Registrations App
[Unverified](#)

This application is not published by Microsoft.

This app would like to:


- View your basic profile
- Maintain access to data you have given it access to

Accepting these permissions means that you allow this app to use your data as specified in their terms of service and privacy statement. **The publisher has not provided links to their terms for you to review.** You can change these permissions at <https://myapps.microsoft.com>. [Show details](#)

Does this app look suspicious? [Report it here](#)

Cancel **Accept**

Electricity Canada Member Onboarding and Management

EN Login / Register

Member

Members generate, transmit, and distribute electricity.

Corporate Partner

Corporate Partners include manufacturers and suppliers of materials, technology, and services to the electricity sector.

Public

Other organizations associated with the electricity sector or have a special interest in electricity issues.

Registration

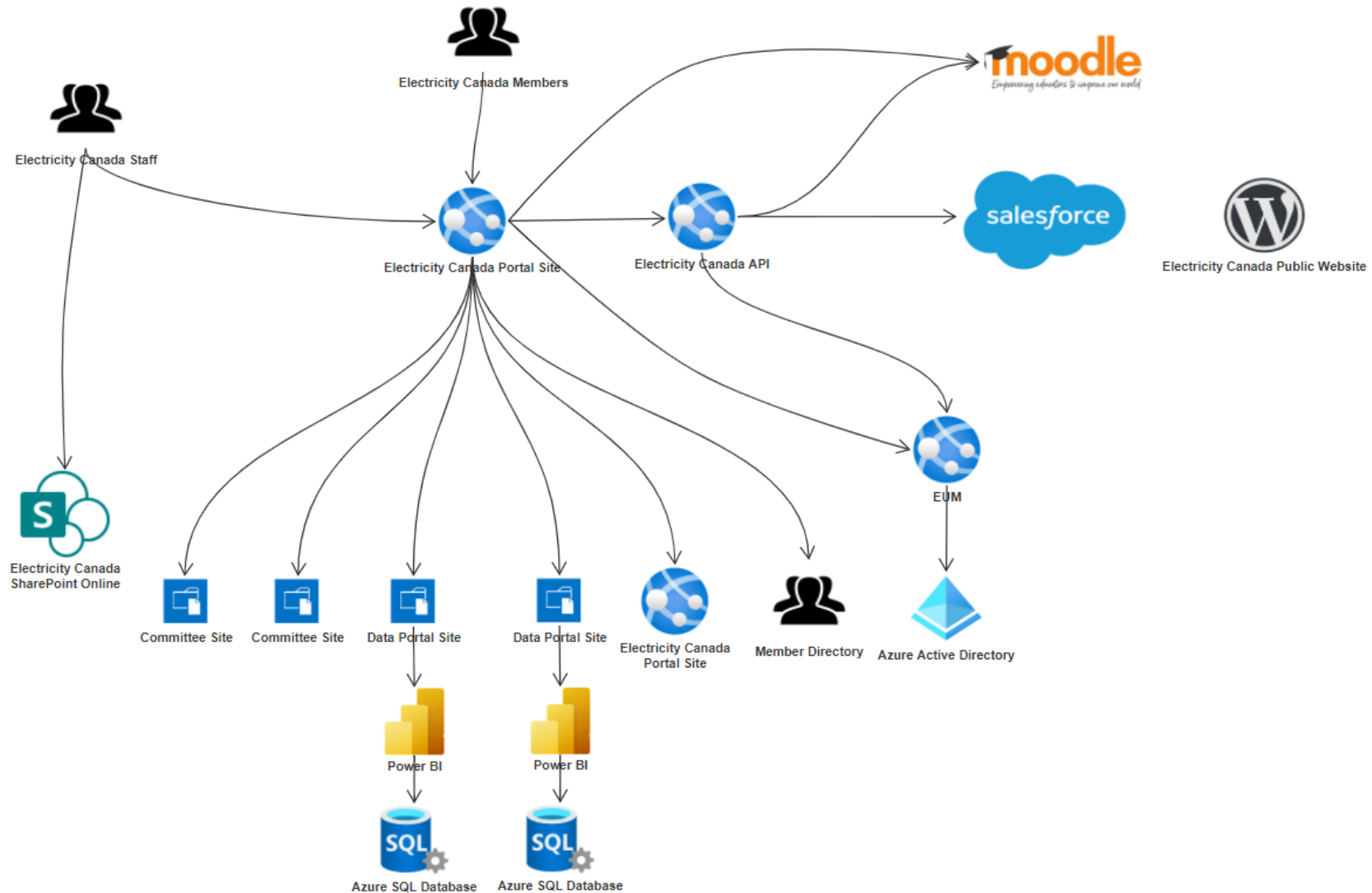
<p>Email *</p> <input type="text" value="adacosta@envisionit.com"/>	<p>Organization *</p> <input type="text" value="Please select your organization"/>
<p>First Name *</p> <input type="text"/>	<p>Job Title *</p> <input type="text"/>
<p>Last Name *</p> <input type="text"/>	<p>Phone Number *</p> <input type="text"/>
<p>Preferred Language *</p> <input type="text" value="Please select your preferred language"/>	

Display my information in the Member Directory ⓘ

I would like to subscribe to the Corporate Partners mailing list

I would like to subscribe to the Current Affairs Newsletter

Scenario One - Electricity Canada Architecture Overview



Municipal Benchmarking Network Canada

Municipal Benchmarking Network Canada
Réseau d'étalonnage municipal du Canada

MBNCanada Portal

Reports Resources Data Dictionary Having an Issue? PC

Home > Members > Data Dictionary

Data Dictionary

PDF XLS

Accounts Payable	Building Permits and Inspections	By-Law Enforcement
Child Care	Clerks	Culture
Emergency Medical Services	Emergency Shelters	Facilities
Fire and Rescue Services	Fleet and Management Services	General Government
General Revenue	Human Resources	Information Technology
Investment Management	Legal	Libraries
Licensing	Long-Term Care	Municipal Data
Parking	Parks	Payroll

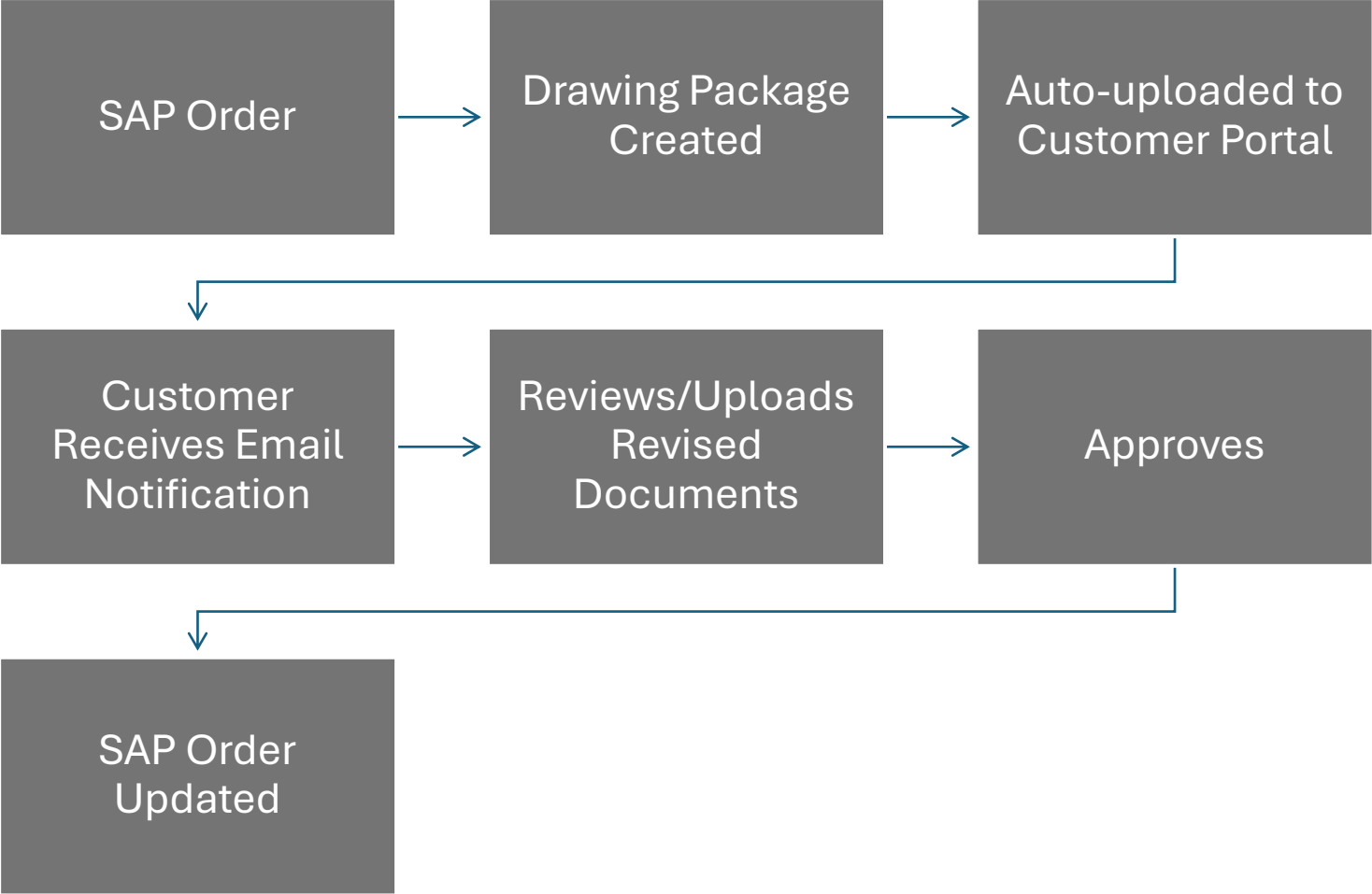
- Association of large municipalities across Canada
- Collection and comparison of service metrics
- Knowledge sharing of best practices
- 1000+ members across the municipalities
- Data collection, dashboards, data dictionary

Scenario Three – Mold Masters: Engineering Extranet



- Engineering 2D and 3D CAD drawings to be reviewed and approved by customers
- SAP integration
- Automation of drawing package preparation
- Workflow for approvals
 - Internal engineering approval may be required first
 - Customer notification and approval
 - Reminder notifications
 - Approval completion updates SAP order status
- Ability for customer to upload annotated or additional documents

Member Management – Direct Invite through SAP



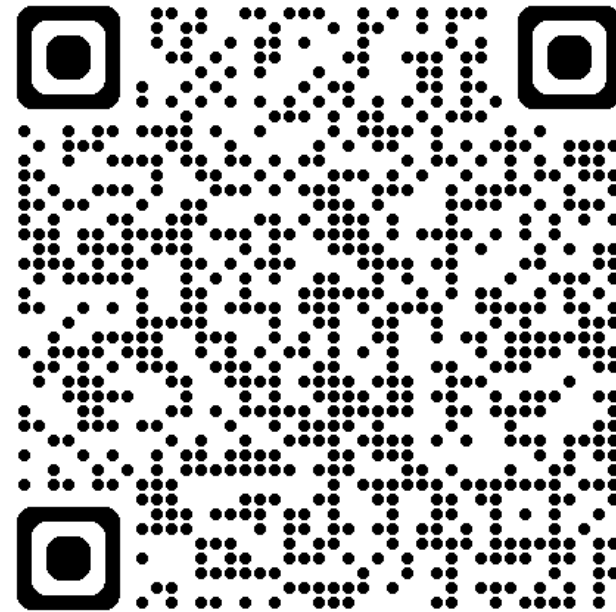
Takeaways

- External sharing happens with or without IT support
- Microsoft 365 is far more secure than email or shadow IT
- There are a lot of configuration options
- Putting the right controls in place is a balance
 - Let the business do business

Enter Our Draw to Win Half Hour Driving Experience



- You get to drive the car
- Join us at the end of the conference or get a voucher for later



Thank you to our 2024 sponsors



CONTACTCENTER4ALL



ALTIGEN TECHNOLOGIES
-POWERED BY INNOVATION. DRIVEN BY RESULTS-



CLARITY™
for Microsoft Teams



DELL Technologies



Extranet
User Manager



Thank you for listening!
Any Questions?

